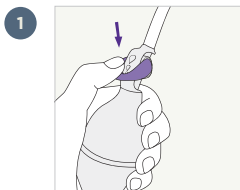
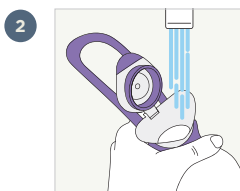


# Qufora® IrriSedo Flow

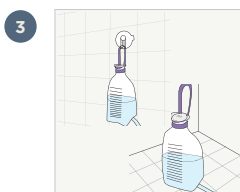
## Quick guide



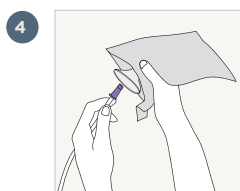
Make sure the water flow regulator is closed.



Fill the water bag with luke warm tap water (36-38° C). You will need more water than you need for your irrigation to prepare your system, approximately 100-300 ml water. Once the water bag is filled, press down on the flip lid until it is closed.



Place the water bag anywhere between floor and shoulder height. It can be placed on the floor or hanging by the handle.

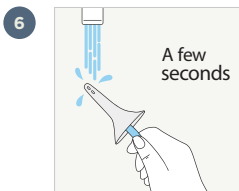


Open the cone pouch at the perforated line. Whilst the cone is still in the pouch press the cone firmly onto the tube connector to assemble your system. Attach the empty pouch to a surface using the sticky area on the back of the pouch.

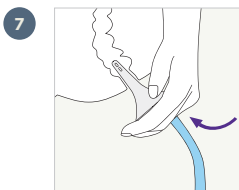


To prepare the system when **hanging**, hold the pump so the water flow regulator is at the top. Now open the water flow regulator.

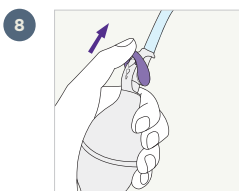
To prepare the system **when placed on the floor**, follow as above and squeeze the pump. When you see the water coming out of the cone, close the water flow regulator.



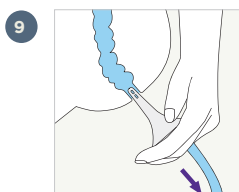
Hold the cone under the tap or dip it in water for a few seconds to activate the hydrophilic coating.



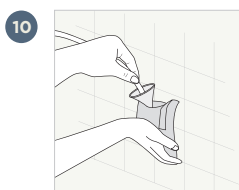
Sit on or over the toilet. Carefully guide the cone up to its base into the rectum. Continue to hold the cone in place during irrigation.



Open the water flow regulator to instil water into the rectum. If the water bag is placed lower than the toilet seat, squeeze the pump to instil water into the rectum. Your healthcare professional will guide you regarding the amount of water to use for your irrigation.



Remove the cone from the rectum. Faecal matter and water will be expelled into the toilet. If advised by your healthcare professional, the procedure can be repeated.



Place the used cone into the pouch and separate the two parts. The pouch can be folded and sealed using the sticky area, then disposed of in household waste.

**The cone is single-use and must not be used again.**

### Cleaning and Storage

Clean the outside of the pump with luke warm water, rinse and dry. Empty the water bag and hang it to dry with the lid open. **Store** the water bag with the pump and water flow regulator, with the lid open, out of direct sunlight, in a dry and ventilated place between 0° and 30° C. **Wash and dry your hands.**



Before use always consult the 'Instructions for use' document delivered with the product.